

FDRViEWS

DASD MANAGEMENT REPORTING

z/OS Storage Management



Users are demanding more and more DASD storage to meet their business needs. Although the cost per TB continues to decrease, total storage requirement keeps growing.

To monitor, understand and control this growth, Storage Administrators need a tool that can quickly and efficiently gather information “on-demand” about their z/OS DASD storage environment...and then give them a reporting mechanism that can provide answers to all their critical storage management questions...



Fast. Efficient. Easy.

- FDRViEWS takes scheduled or ad-hoc “snapshots” of the status of your z/OS DASD storage at the volume or data set level.
- The collection process is quick and requires very little CPU resource. You can run it whenever you wish, and with minimal impact on your z/OS environment.
- Once the raw data has been collected, the FDRViEWS Windows-based GUI interface is used to interrogate the data through a simple “ask a question, get an answer” query system.
- You can then view the answers to your questions in a variety of formats, such as bar charts, pie charts and tables (see below), all viewed through a standard Microsoft Excel spreadsheet.
- The Report Distribution feature lets your users view reports without requiring access to the main FDRViEWS GUI interface.

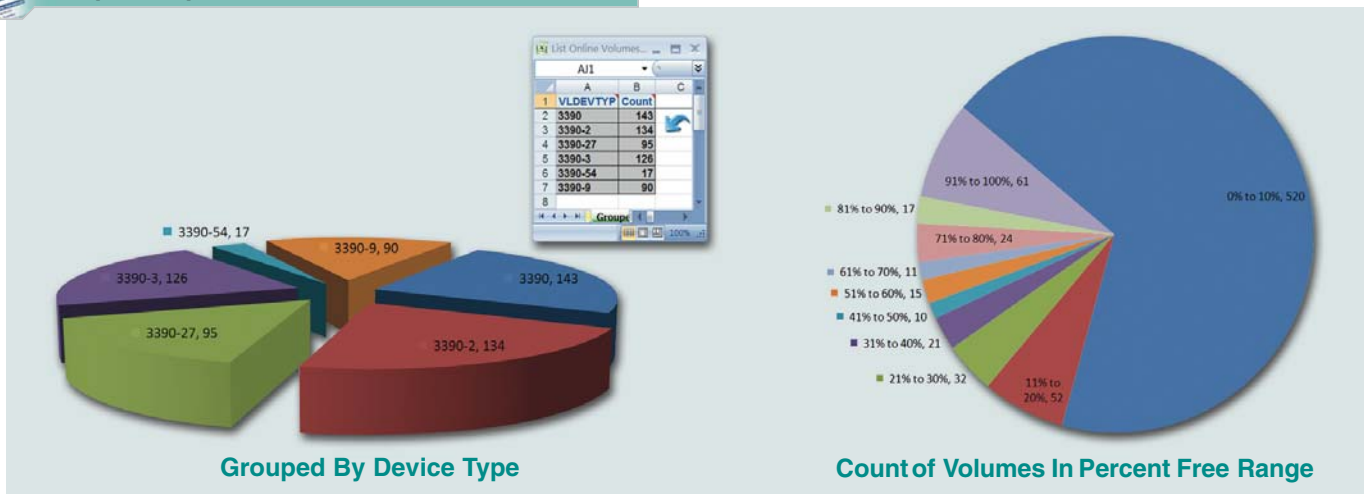


Introducing FDRViEWS

FDRViEWS is a cost-option to FDREPORT or FDRABR which enables you to manage your current storage requirements, identify trends, predict future requirements, and anticipate peak demands. FDRViEWS is easy to use. It makes your life much simpler, and it allows you to put a powerful reporting tool into the hands of other, less-experienced, users.



Examples Report Formats

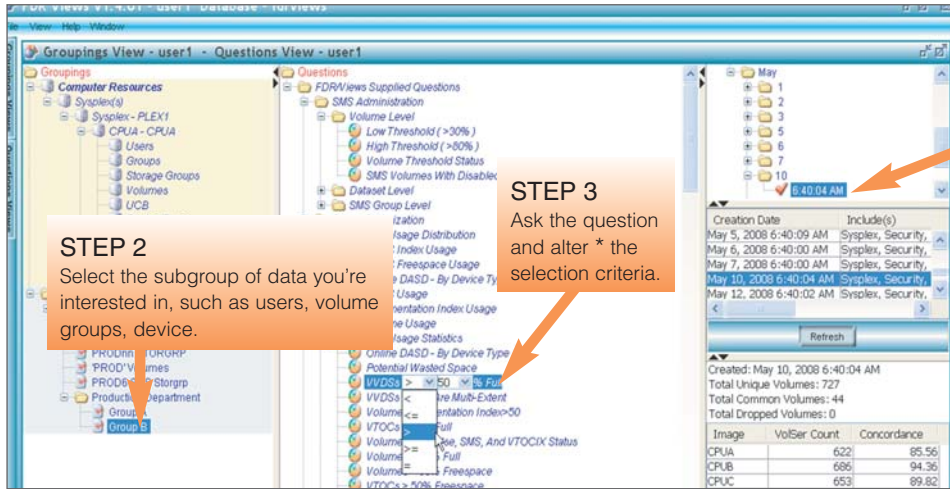


FDRViEWS

DASD MANAGEMENT REPORTING

Three Simple Steps

Once you've taken some ad-hoc or scheduled data collections, just three simple steps are all that's required to choose the data you wish to report on and then ask the questions you wish to have answered.



STEP 1
Choose the data snapshot that you want to report from (by default, the most recent one is used).

STEP 2
Select the subgroup of data you're interested in, such as users, volume groups, device.

STEP 3
Ask the question and alter * the selection criteria.

* The ability to tailor the selection criteria allows you to create an almost limitless range of questions

Efficient Data Collection

FDRViEWS' high-performance data collection process can be run on an ad-hoc or scheduled basis.

In a recent test, we ran a "volume level" data collection against 8,000 disk volumes (43TB's) and 1 million datasets. The collection took just 23 minutes.

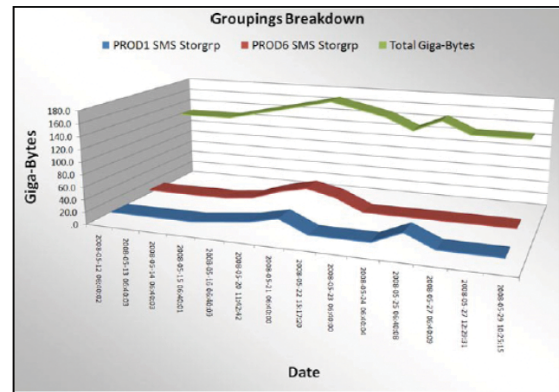
This non-obtrusive process allows you to run your collections as frequently as required, and without affecting the performance of your z/OS system, or the users and applications that run under it.

The collected data is then sent across to the Windows client and stored for fast, easy and flexible reporting through the GUI interface.

Storage Trending

FDRViEWS provides a storage trending function, which allows you to see and compare

Total Allocated Bytes against **Total Used Bytes** of storage over a selected period.



* In this example of "groupings" storage trending, we can see the total installed Gigabytes of DASD space (in green), together with the storage utilization of two SMS Storage Groups: PROD01 (in blue) and PROD06 (in red).

Want to Know More About FDRViEWS? For a No-Obligation FREE Trial or to request a FREE Concepts & Facilities Guide, ask your local sales representative or visit: <http://www.innovationdp.fdr.com/cfguides>



CORPORATE HEADQUARTERS: 275 Paterson Ave., Little Falls, NJ 07424 • (973) 890-7300 • Fax: (973) 890-7147
E-mail: support@fdrinnovation.com • sales@fdrinnovation.com • <http://www.innovationdp.fdr.com>

EUROPEAN OFFICES:	FRANCE 01-49-69-94-02	GERMANY 089-489-0210	NETHERLANDS 036-534-1660	UNITED KINGDOM 0208-905-1266	NORDIC COUNTRIES +31-36-534-1660
--------------------------	--------------------------	-------------------------	-----------------------------	---------------------------------	-------------------------------------