

UPSTREAM...

Simple & Comprehensive Backup and Recovery

Having to perform data recovery due to loss of data can have substantial impact to your organization, its revenue and its customers. With the clock ticking, management looking over your shoulder and important corporate data at risk and production stopped, you need a product that is reliable, simple-to-use, and backed by a company committed to providing excellent technical support when you need it.

INNOVATION's UPSTREAM provides comprehensive storage management protection for servers and databases anywhere in the enterprise. UPSTREAM enables the effective protection of your business-critical data by simplifying, centralizing and automating your backup and recovery operations. UPSTREAM is designed to:

- Lower the Cost of Protecting your Open Systems Data
- Improve Data Restore Capabilities
- Provide Superior Levels of Protection for your Data
- Lets you Provide Comprehensive Data Protection with Less Staff

Product Features:

- Certified Solution for NetWare
- High Performance
- Unique De-Duplication Features...Full Merge Backup, Duplicate File Support & Segmented Backup
- Extensive Multi-Platform Support
- Broad Based Device Support
- Centralized Administration
- Backup to Disk or Tape
- SAN Express LAN-Free Backup
- Hot Database Agents Include GroupWise
- Supports All Versions of NetWare from NetWare 386 to OES2



Significant Benefits:

- Reasonable License Fees
- Scalable
- World Class Technical Support
- Supports Broad Range of Platforms from x86 Systems to zSeries Mainframes

Extensive Support



YES
CERTIFIED
NETWARE®

Novell.

UPSTREAM provides extensive support for SUSE Linux Enterprise 10 including OES2/Linux. UPSTREAM supports a choice of backup Storage Servers and a wide variety of client platforms that include NetWare, Windows, UNIX and Linux.

UPSTREAM provides extensive support for Novell NetWare that includes Novell NetWare® 386, v4.x, and v5.x and 6 completely, and has been certified Novell tested and approved.

UPSTREAM comprehensive support for NetWare includes Storage Management Services SMS and NetWare Directory Services (NDS), for NDS schema and extended schema. Using Novell's architected SMS and transporting the data in System Independent Data Format (SIDF), UPSTREAM offers complete support of NetWare Directory Services.

Support for Cluster Services enable automatic failover for multi node cluster environment and also provides restart ability for failed backups/restores. Support for NSS volumes and open files guarantees that open files are backed up even if in use. Other special NetWare support includes name spaces, compressed data, security attributes, and special NetWare file and directory characteristics.

UPSTREAM features an agent that performs online database support for Novell GroupWise 6 and 7. The agent was written especially for Novell GroupWise and uses the GroupWise Target Service Agent GW TSA, TSAFSGW or native TSAFS with GW support enabled. The agent provides reliable online backup of a running GroupWise system by successfully backing up open files and locked files.

The easy-to-use UPSTREAM agent backs up standard GroupWise directories and files. This support allows you to restore the entire GroupWise system, or any component down to just a single user's mailbox!

The “Director” Easy-to-Use GUI Interface

UPSTREAM is managed by the easy-to-use but full featured interface “Director”, that can be run from a web browser or workstation anywhere in your network, virtually anywhere in the enterprise. The Director offers the Systems Administrator a single, system-wide point-of-control for all UPSTREAM operations.

Online Database Agent and Log File Support:

UPSTREAM provides extensive Non-Disruptive agents for databases and messaging systems with parallel data stream processing to get the backups completed as quickly as possible.

Support includes:

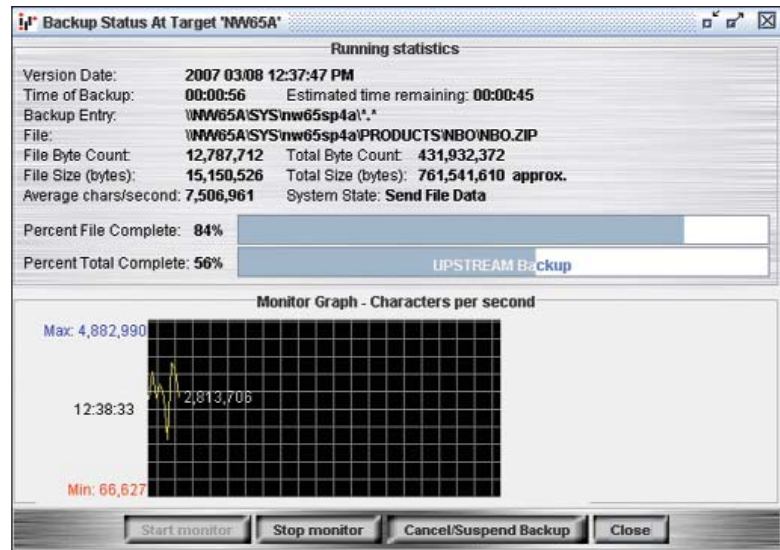
- Oracle with Support for RMAN
- MS Exchange
- MS SQL Server
- Lotus Notes Domino
- Universal Database Server
- Novell GroupWise
- SAP R3
- Support for SQL-BackTrack for Sybase, Informix, or Oracle
- Raw File Systems Support

Product Summary:

- Batch Initiated Processing with Condition Code Processing and Exception Reporting
- Extensive Reporting and Logging
- Centralized Control with Audit Trail
- Efficient Storage Utilization on Tape and Disk
- Powerful Vaulting and Disk Migration
- Cluster Support
- Checkpoint Restart for Backup & Restores
- Open File Agent Support
- Disk Migration Utility for Tape Stacking
- Event Notification for Automated Operations and Alerts Via E-mail, or SNMP
- Multi-Platform Support Includes Agents for Windows NT/2000/XP/Server 2003, NetWare, OES2/Linux, AIX, SUN and Intel Solaris, HP-UX, Tru64, x86 Linux, Linux for pSeries, Linux for zSeries and VMware.

Executive Summary:

- A **powerful, reliable** and **high-performance** backup/recovery tool for your Open Systems data.
- Provides **centralized, automated** and **unattended** backup/restore across a heterogeneous network.
- UPSTREAM features reduce the administration effort required for the backup process.
- Offers a **flexible** and **scalable solution** for securing anything from large corporate data centers to remote satellite offices.
- **First-class technical support.** All from a vendor providing Backup Software for over 34 years. Innovation has a solid reputation for providing unparalleled technical support.



www.innovationdp.fdr.com/products/upstream



CORPORATE HEADQUARTERS: 275 Paterson Ave., Little Falls, NJ 07424 • (973) 890-7300 • Fax: (973) 890-7147
E-mail: support@fdrinnovation.com • sales@fdrinnovation.com • <http://www.innovationdp.fdr.com>

EUROPEAN OFFICES:	FRANCE 01-49-69-94-02	GERMANY 089-489-0210	NETHERLANDS 036-534-1660	UNITED KINGDOM 0208-905-1266	NORDIC COUNTRIES +31-36-534-1660
--------------------------	--------------------------	-------------------------	-----------------------------	---------------------------------	-------------------------------------